



PIONEER SAFETY SOLUTIONS LTD.

Solutions & Services Catalog



info@pioneersafety solutions.com



www.pioneersafety solutions.com

Contents

Our Approach	4
Pioneer Solutions - Visual	4
Fleet Telematics	5
Electronic Logging Device (ELD).....	6
Apollo ELD.....	6
Driver Behaviour Management	13
GPS & In-Vehicle Mentoring System	13
Greenroad – Driver Behaviour Monitoring	15
In-Vehicle Camera - Surfsight.....	16
In-Vehicle Camera - idrive.....	21
In-Vehicle Camera - Streamax.....	24
NOCELL Distracted Driving (Mobile Device) Management.....	25
Asset Tracking.....	26
Solar Powered	26
External Powered (Battery or Power Source).....	26
Environmental Solution	27
EnviroApps.....	27
Fit-for-Purpose Solutions	28
Stackability & Integration.....	28
People.....	30
TalentClick.....	30
Fitness for Duty	31

PIONEER SAFETY SOLUTIONS

Soberey.....31

Consulting Services..... 32

 Consulting Methodology.....32

 Common Thread in all we do: Risk Management.....32

 Consulting Services: Road Safety33

 Consulting Services: Occupational Health & Safety.....35

 Consulting Services: Environment.....35

 Performance Management & Sustainability35

Strategic Partnerships 37

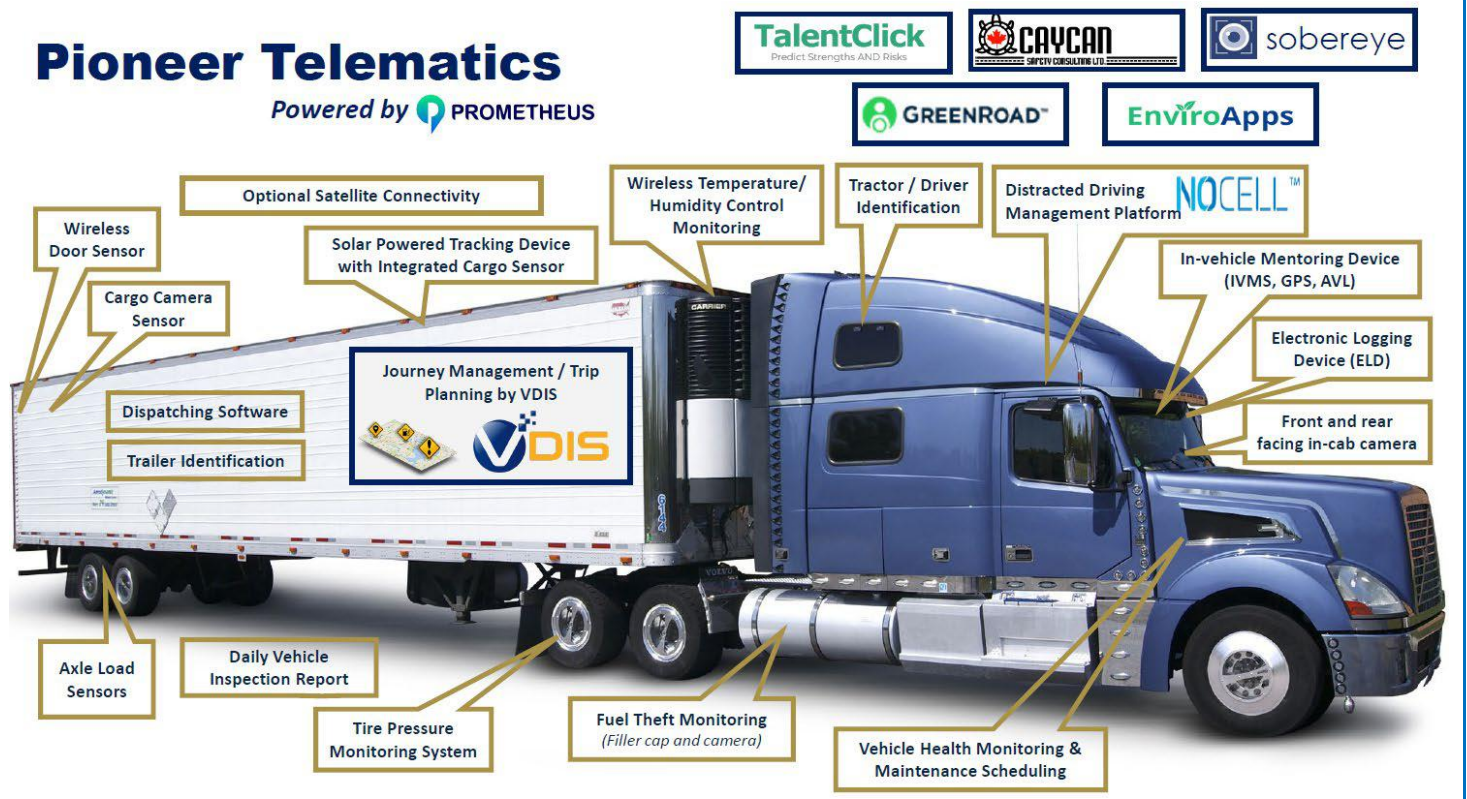
Contact Information 39

Our Approach

We do not sell a device...we sell a solution!

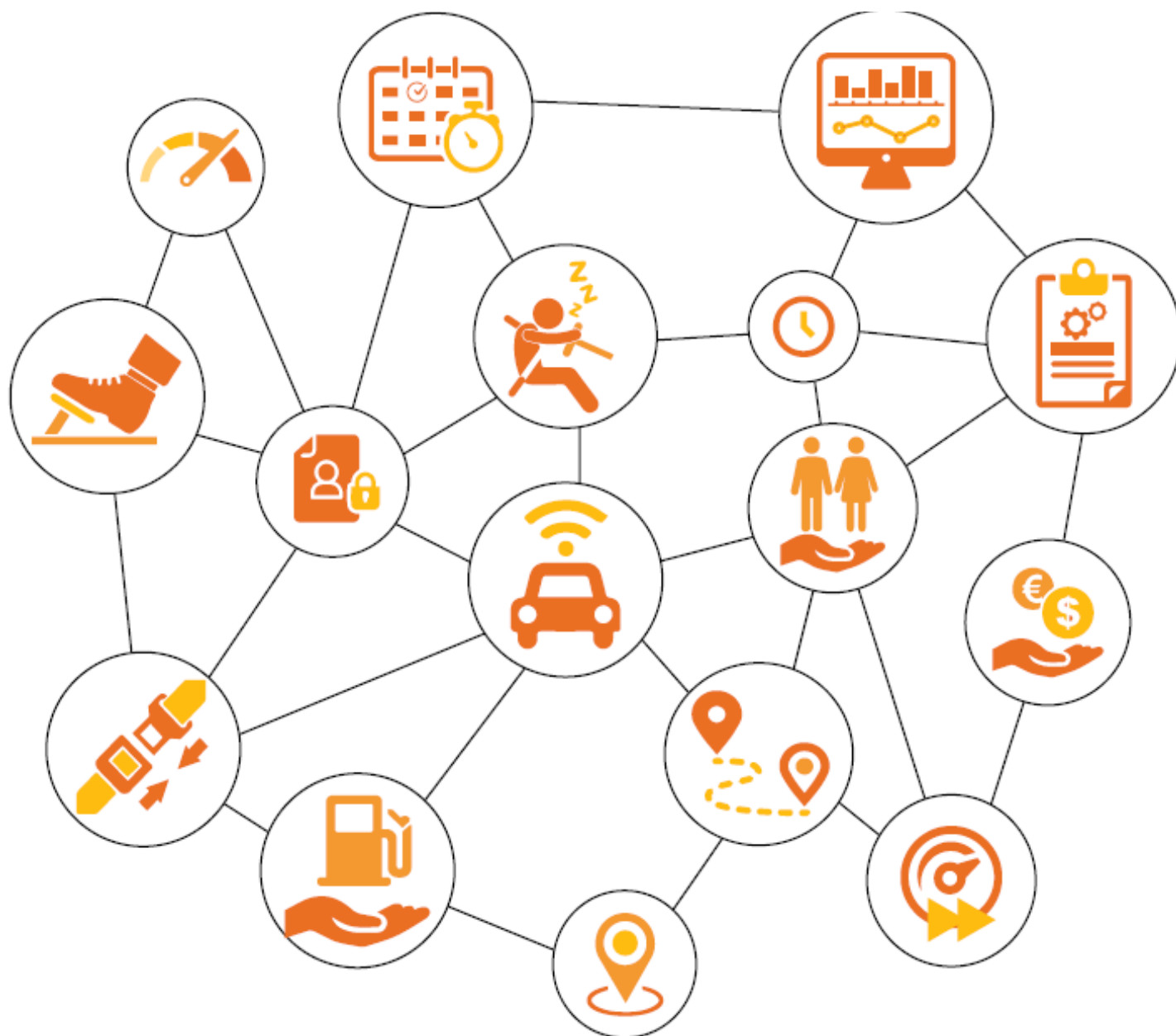
We are not an “out of the box” provider. We work with our customers to understand their needs and then build the solution together and put it all on one platform.

Pioneer Solutions - Visual



Fleet Telematics

Employing fleet telematics, as part of a comprehensive work-related road risk management system, must include clear policies on key road safety issues. Pioneer can support the development and implementation of an end-to-end solution.



Electronic Logging Device (ELD)

Apollo ELD

ELD Registration at eDash (APOLLO)
Registration ID: 0008

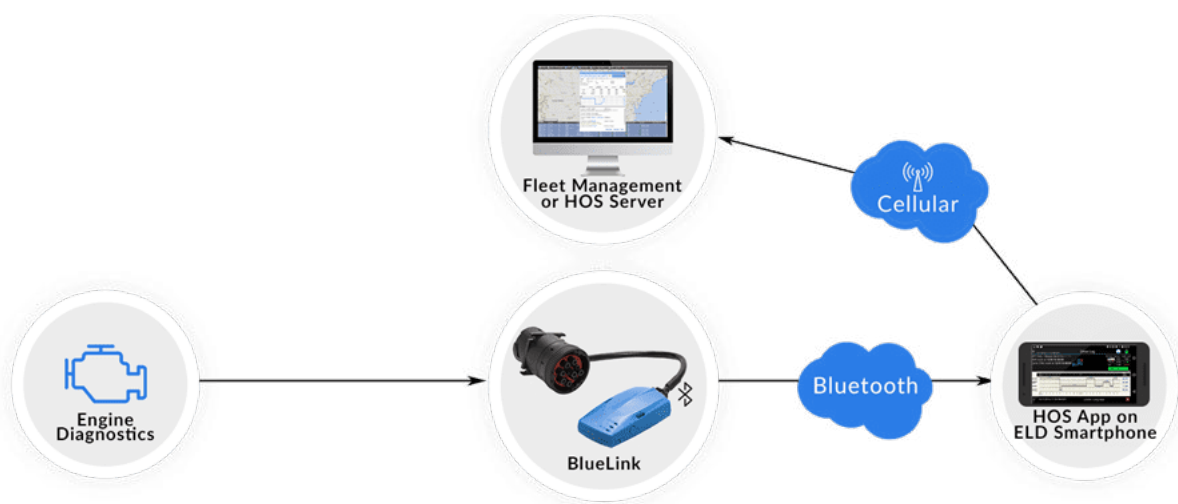


Apollo is the ideal ELD Device to be used with smartphones or broadband tablets, for fleets looking for ELD compliance with basic fleet management. Sends via Bluetooth BLE to the DriverLog Logbook app the engine diagnostics data required by FMCSA & **Canadian DOT** for ELD compliance including Odometer, Engine Hours, Engine ON / OFF.



Compatible with all major vehicle protocols- J1939/J1708 & OBDII and with a wide variety of cable options to choose from, BlueLink ELD works with just about any vehicle. BlueLink sends the GPS and ECM data via BLE to the DriverLog App running on any mobile device, DriverLog receives the data and syncs with the cloud via the mobile device's cellular data plan.

- **Standalone ELD Compliance Solution** - For fleets looking for compliance only, BlueLink plugs into the vehicle's ECM without interfering with your existing telematics installation.
- **Plug & Play Installation** - Simply plug BlueLink into the vehicle's Jbus port via the 9-Pin, 6-Pin or OBDII (Heavy & Light Duty Cables available) and you're all set!
- **GPS Tracking** - Provides for a complete ELD and GPS Tracking solution without the need to install a telematics GPS unit in each vehicle (GPS is dependent on the driver running the App on his phone).



ELD – Driver Tablet

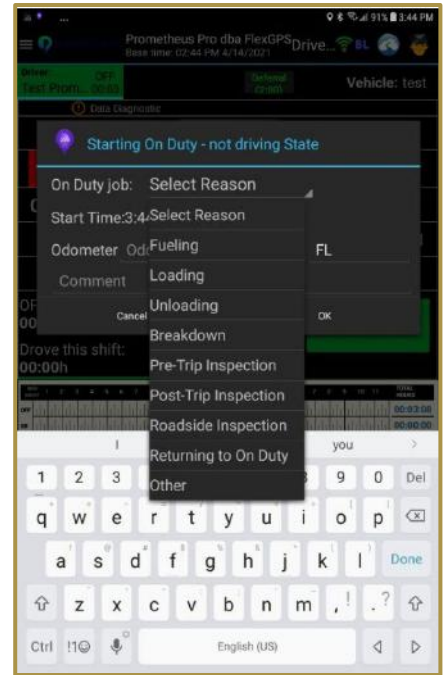
Selection of visuals, as seen on Driver's ELD tablet:



Main Screen



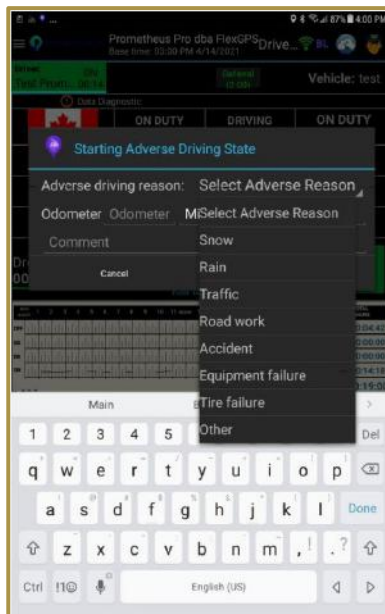
Driver's Record



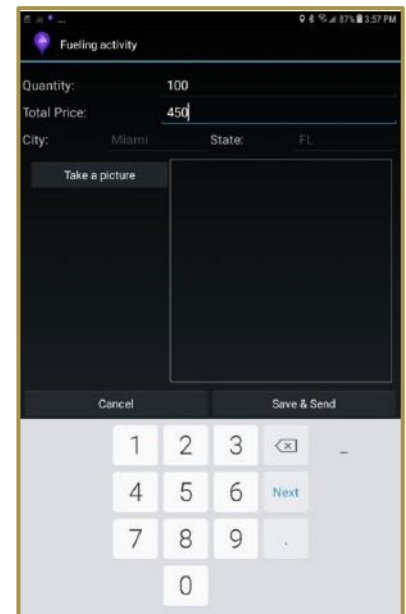
Change of Duty



Daily Vehicle Inspection Report



Adverse Driving Note



Fueling Record

PIONEER SAFETY SOLUTIONS

Administrators have the ability of using our Portal or our App to monitor all activities. Below is a selection of visuals from the Administrator Portal:

Review daily logs

Driver's Daily Log

Wed 6 Jan Thu 7 Jan Fri 8 Jan **Sat 9 Jan** Sun 10 Jan Mon 11 Jan Yesterday 12 Jan Today 13 Jan

Company: Company Name and Address

Driver: Driver Name ID Driver ID Co-Drivers

Vehicle/Plate# 500 (JB45IM) Trailer/Plate# 22910 Manifests empty

Total Driving, Mile 278 8 Days

	STARTED	ON DUTY NOT DRIVING	DROVE	ON DUTY	DRIVING BALANCE
CYCLE	5 days ago (04 Jan)	10:47	39:12	49:59	20:00
SHIFT	11:14 AM (12:45h ago)	1:40	5:25	7:05	4:51
THIS DAY	Midnight	1:40	5:25	7:05	

midnight 1 2 3 4 5 6 7 8 9 10 11 noon 1 2 3 4 5 6 7 8 9 10 11 TOTAL

OF SL DR ON

3:30:42 13:23:23 5:25:17 1:40:38 24:00:00

Send log to Support

11:59:59 PM SUBMIT
Battery Level: 49% | Data Used: 1.49MB BLE MAC Address: 570200190039 BLE FW: BL02.49 Dec 26 2018/H1
Device ID: 20B0CF077-7082-459E-B4F7-DB175403408D-5.0.3
*Entry was created at 1/11/2021 7:43 AM

Administrator Editing Capabilities

Driver's Daily Log

Wed 6 Jan Thu 7 Jan Fri 8 Jan Sat 9 Jan **Sun 10 Jan** Mon 11 Jan Yesterday 12 Jan Today 13 Jan

Company: Company Name and Address

Driver: Driver Name ID Driver ID Co-Drivers

Vehicle/Plate# 500 (JB45IM) Trailer/Plate# empty Manifests empty

Total Driving, Mile 278 8 Days

	START	ON DUTY	DRIVING BALANCE
CYCLE	6 days	59:33	10:26
SHIFT	8:53 AM	9:34	2:07
THIS DAY	N	9:34	

midnight 1 2 3 4 5 6 TOTAL

OF SL DR ON

3:06:30 11:19:23 8:52:54 0:41:13 24:00:00

Send log to Support

*Entry was created at 1/10/2021 9:26 PM
Driver comment: update status
add before edit add after

7:39:39 PM OFF DUTY 6.36 mi E Amarillo, TX
Reason: Other Comment: and driver Id: 540555 1A

Edit SLEEPER BERTH

Driver ID: Driver ID

State: Sleeper Berth

Start Date: 8:53 AM

City: On Duty - not driving

State: Adverse Driving

Yard Moves

AG Exemption Use

Save Cancel

Daily Vehicle Inspection Report

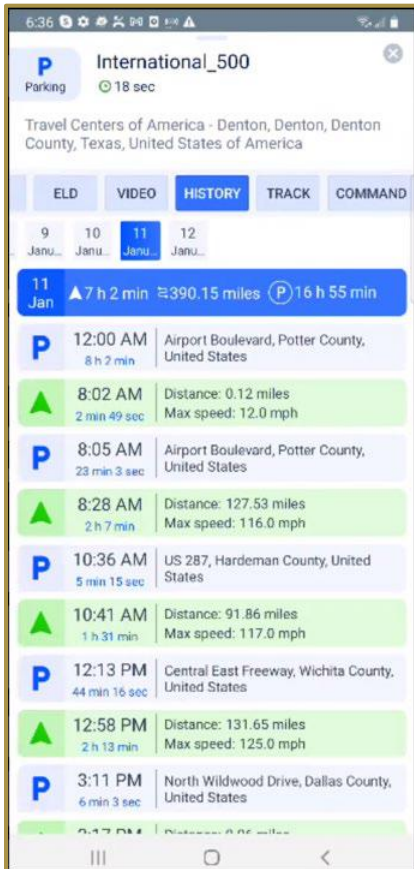
Rules	Last Update	Driver Name	Driver ID	Status	Vehicle	Address	Cycle	Cycle Balance	OnDuty Shift Bal	DR Bal	Next Break	Break time
1 US	1/13/2021 6:46 PM	Training User	training	OFF DUTY	Demo_1000 1000	Miami, FL	8 Days	70:00	14:00	11:00		0:06
2 US	1/13/2021 6:45 PM			DRIVING	NTN_500 500	Tyler, TX	8 Days	63:34	4:17	4:17	1/14/2021 2:45 AM	0:00
3 US	10/19/2020 2:52 PM	Driver Names and ID #'s		OFF DUTY		Hialeah, FL	8 Days	70:00	14:00	11:00		2068:55

Driver status is updated immediately.

PIONEER SAFETY SOLUTIONS

Below is a selection of visuals from the Administrator app:

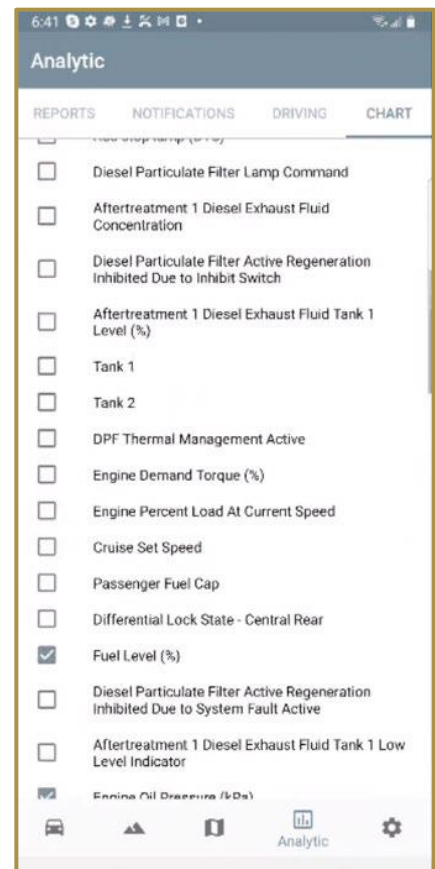
Review daily logs



Review driver behaviour



Create & send reports



Reporting Features

A multitude of reports can be generated and emailed immediately. Reports include:

Daily Vehicle Inspection Reports	Daily Hours of Service	Driver Activity	Fuel Purchases
Unidentified Driver	Hours of Service Logs	IFTA	

Customer Support

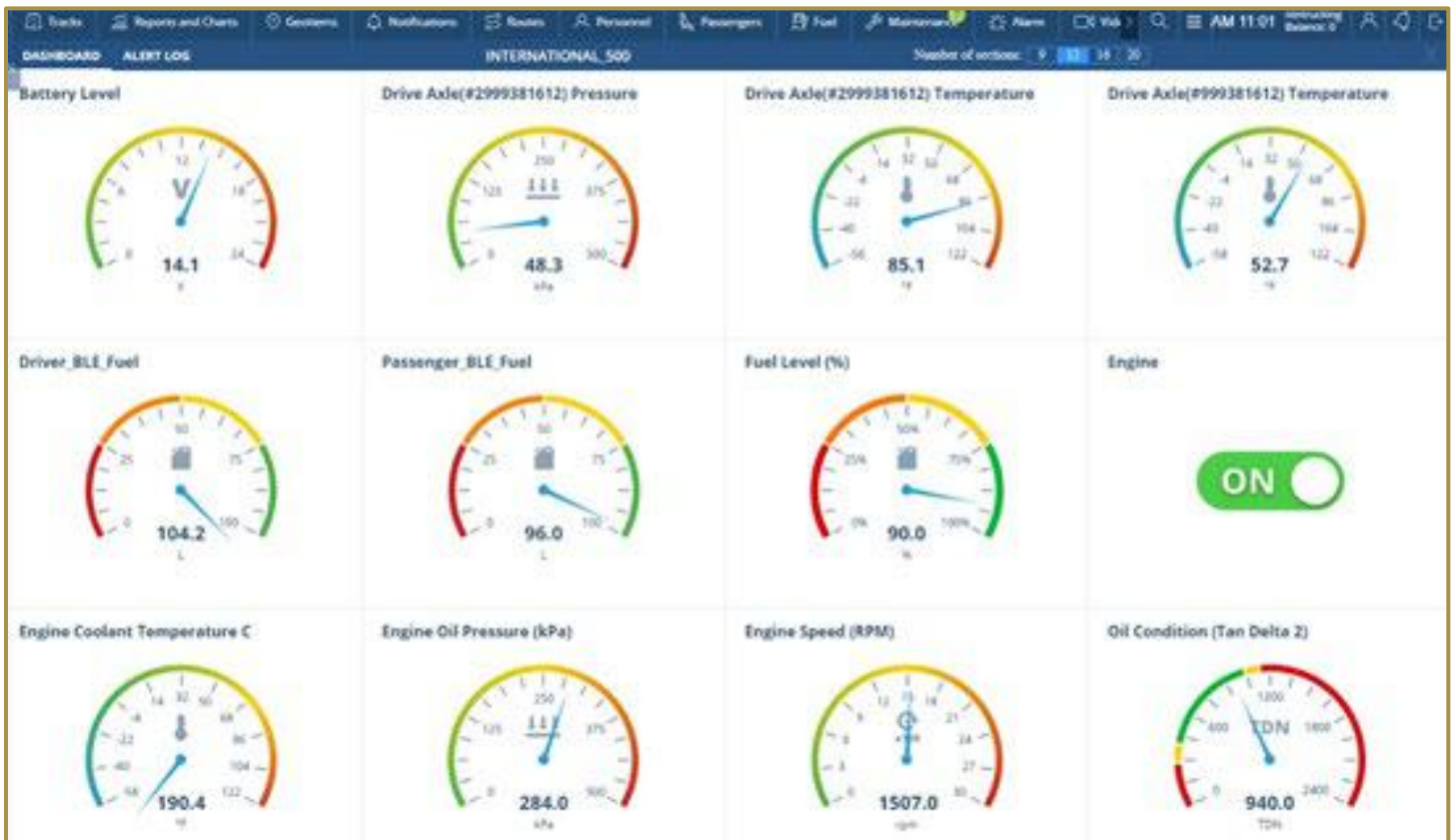
Pioneer has 24/7/365 support, just a call away. One of the largest challenges for many drivers is their lack of experience with technology. With our ELD system and driver tablet*, when a driver calls, **our support team can log into the driver's tablet LIVE and work with the driver to rectify any issues.** Our support staff sees what the driver sees, which improves the driver's experience with the ELD system.

**To receive this service, customers must use Pioneer's certified tablet.*

ELD + VEHICLE DIAGNOSTICS

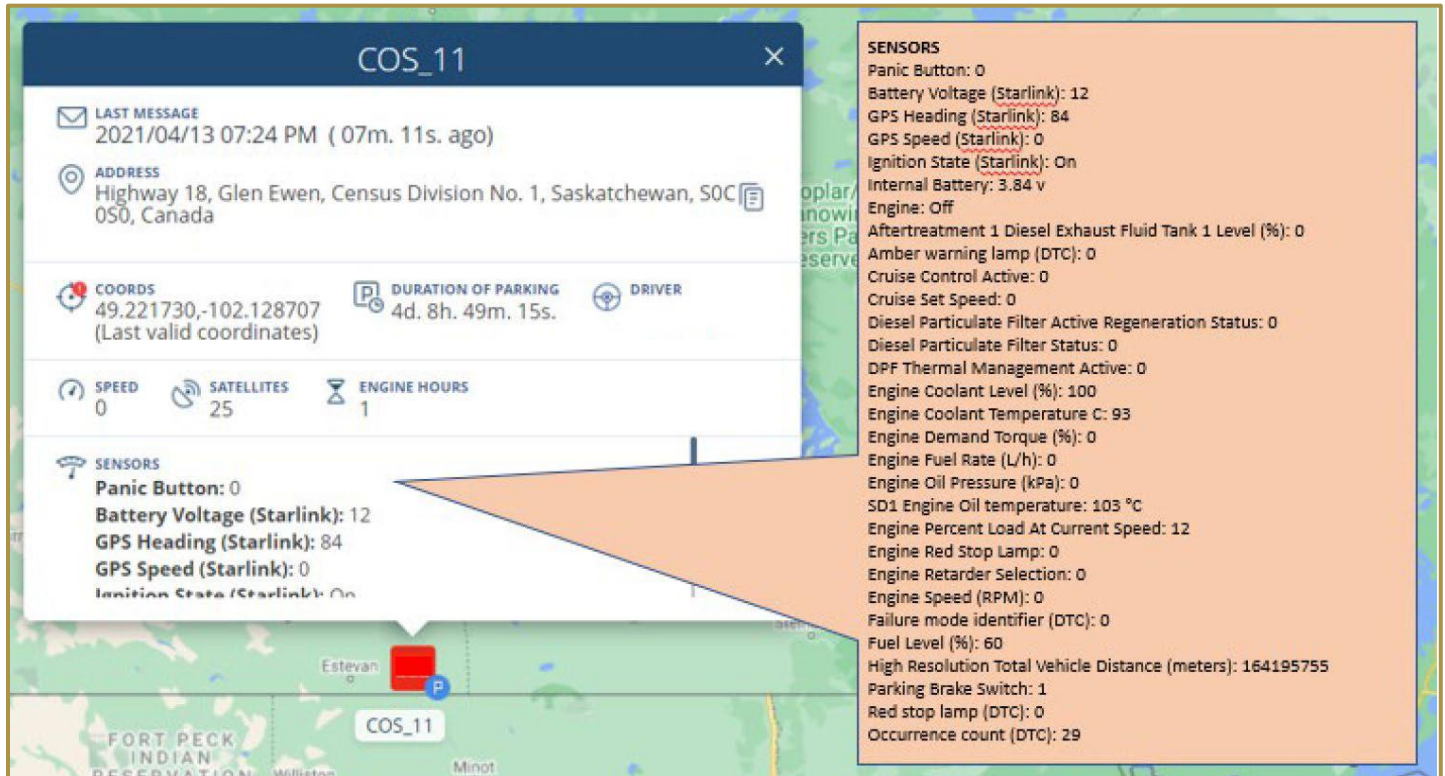
Telematics which monitors a vehicle's engine functions are a key component of effective fleet management, which can reduce running costs. Telematic and informatics diagnostics ultimately allow for improved vehicle reliability by utilizing diagnostic reports to illustrate the problems / statuses of a vehicle at any given point in time. This involves high level integration of hardware and software technologies to extract fault codes and other information stored in the electronic control unit (which is often what telematics solutions are interfacing with).

Dashboard of vehicle's diagnostics



PIONEER SAFETY SOLUTIONS

Live monitoring of a vehicle's information



Customizable Reports

The screenshot shows the Customizable Reports interface. It features a 'Tests' section with a dropdown menu for 'Table name' (set to ADAS Violations) and a 'Logic' dropdown (set to ADAS Violations). Below these are checkboxes for 'Grouping' and 'Total'. A 'Select all' checkbox is present, followed by a list of fields: Time, Address, Event, Event ID, and Media. A 'Filter' checkbox is also visible. A large dropdown menu on the right lists various tests, including ADAS Violations, Alarm button statistic, Card reader statistic, Command History, Connection quality, Daily Activity, Daily statistics, Designated driver, Digital sensors, Employees clear service, Engine hours, Filling, Filling/Drain, GIS overspeeding, Genset Utility & Power test, Idling (highlighted), Last Trip, Maintenance, Maneuvers, and Messages.

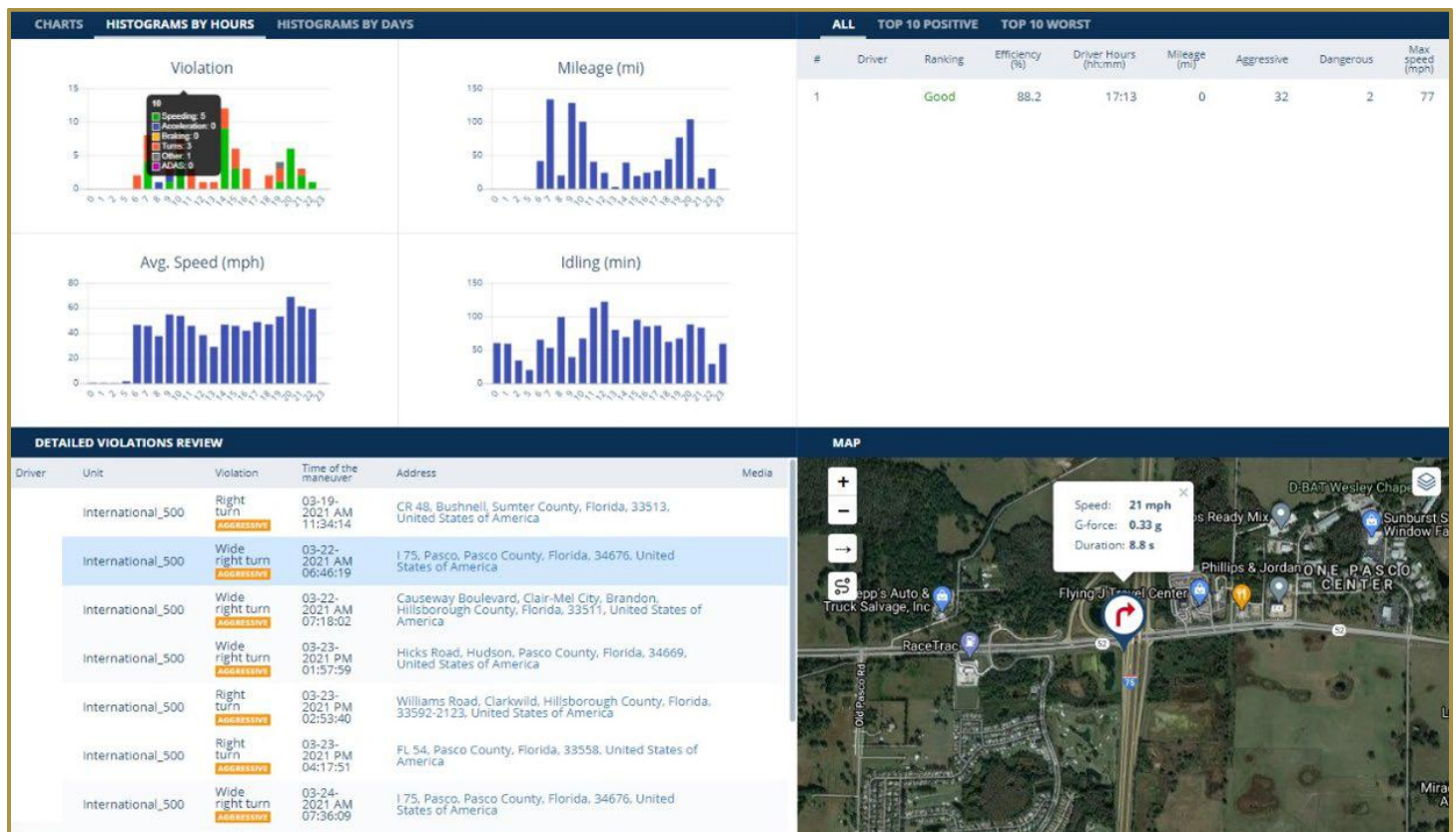
ELD + DRIVER SAFETY

Keep your drivers safe with Pioneer!

Drivers are the most valuable asset in your operation. Driver behavior tools, whether app-based or hardware is installed in a vehicle, are intended to not only monitor driving behaviors, but to mentor drivers. The end goal is to modify an individual's driving behaviors and reduce unsafe driving, as well, as reinforcing positive behaviors.

The implementation of a system can deliver a company's immediate goals...and more. Keeping them safe when they are on the road through monitoring their driving behaviours is critical to delivering corporate goals and profits. Your vehicle is a moving billboard for your company and protecting your brand is important. By monitoring driving behavior and providing ongoing coaching, can increase your team's psychological safety, while potentially lowering your annual insurance premiums.

Our Driver Safety platform monitors a variety of metrics. These include distance driven, speeding, hard braking, hard acceleration, hard turns and more. This data can support company leadership in having positive dialogue with drivers to understand what may have led to the event and then coach the driver on how to improve their driving behaviours.



Driver Behaviour Management

GPS & In-Vehicle Mentoring System

Pioneer offers **non-ELD** vehicle tracking and driver behaviour solutions, which enable:

Driver Behaviour Monitoring and Eco-Drive solution

- Reduce fuel consumption, improve fleet safety and set-up a motivation system by monitoring driver behaviour. Solutions offer In-vehicle verbal coaching, the ability to monitor speeding, hard braking, hard acceleration, idling, and cruise control usage.

Vehicle tracking

- Real-time vehicle tracking is a proven way to improve fleet performance. Optimise operating costs, increase efficiency and save time. Solutions offer geofencing and alerts for route exceptions.

Fuel Monitoring and Control

- Monitor fuel level and prevent fuel thefts. Fuel costs can amount up to one-third of all fleet operating costs. Having an accurate fuel monitoring and control system is one of the main ways to cut operating costs and increase efficiency.

Safety & Security solutions

- Add extra safety and security measures to the vehicle and trailer. Improve cargo, driver, vehicle and trailer protection. Capabilities include ignition blocking, towing detection, monitoring of trailer temperature & humidity and door status.



HCV5

HCV5 is an advanced GPS tracker for trucks, busses, agriculture, and other specialized machinery. It is designed for vehicle tracking and can perform advanced tasks – read on-board computer data (CAN), monitor driver behavior, remotely download tachograph data, manage fuel, etc.



Trace5

Trace5 is an easy-to-use Telematics Solution, which combined with the TrustTrack Platform, supplies a user-friendly, reliable and advanced GPS tracking platform. Manage driver behaviour and your fleet. Best suited for light vehicles.

PIONEER SAFETY SOLUTIONS



Eco Panel (Driver Behaviour Display)

The Eco-Drive panel is a device developed and manufactured by Ruptela for monitoring and education of the drivers in the real-time. The panel informs the driver when his/her driving actions are causing fuel wastage and accelerating vehicle depreciation. Driving information is also sent to the real-time monitoring and control system, which analyses driver behavior and provides data for the driver performance evaluation.



StarLink TrackerWi-Fi

The StarLink TrackerWi-Fi offers versatile vehicle tracking device, combined with driving behavior monitoring, Bluetooth and Wi-Fi communication. The StarLink TrackerWi-Fi creates Wi-Fi hotspots in the vehicle for up to eight devices. It features 4G cellular modem, GPS/GLONASS/Galileo location module and an ability to navigate inside underground parking lots or in mines, internal antennas, emergency button support, and built-in data logger.

In today's ever increasing technological world, Pioneer can connect a variety of accessories to the above solutions, including:

- Vehicle diagnostics
- Fuel flow meter
- Panic button
- ignition interlock devices (Alcohol)
- Company card reader
- Motion sensor
- Fatigue sensor
- Axle load sensor
- RFID reader
- Cameras (forward facing, driver facing, inside of trailers, inside buses)

Greenroad – Driver Behaviour Monitoring



The Recognized Leader in Driver Safety offering mobile app-based solutions.

The GreenRoad Platform supports diversified operations, complex vehicle ownership, global distribution and various types of vehicles and drivers across all industries.

Digitalized Driver Safety Platform

Today's dynamic environment calls for a comprehensive approach to driver safety.

You can now have a unified risk management program and tools for empowering all your brand ambassadors - professional drivers, contractors, general staff and managers - to achieve better results.

We believe that everything starts from driver behavior and has a direct impact on your organization.

Our Driver-Centric approach turns your drivers into your partners and keeps them focused. Using mobile based technology, motivating data and digital tools, fleets can now realize outstanding results with minimal management intervention.

GreenRoad's real-time driver coaching and positive psychology reduce human error on the road and motivate awareness. Its cloud-based contextual intelligence and advanced BI tools continually analyze driver behavior, delivering effective real-time warnings and advice.



GreenRoad Drive™ Software-Only App

Turn driver mobile devices into intelligent, in-vehicle driving and training coaches. Downloads and onboards in minutes to support enterprise digitalization processes and to promote safety across the business – including for contractors and remote drivers – while co-residing with other apps



GreenRoad Central™ Fleet Management Portal

Take an efficient, proactive approach to fleet safety and operations management using GreenRoad's KPI dashboards, and artificial intelligence (AI)-based deviation-from norm data, with full drill-down into the details. Access via your internet browser or the GreenRoad Drive™ app.

In-Vehicle Camera - Surfsight



SURFSIGHT AI-12 VIDEO TELEMATICS A step forward in fleet safety

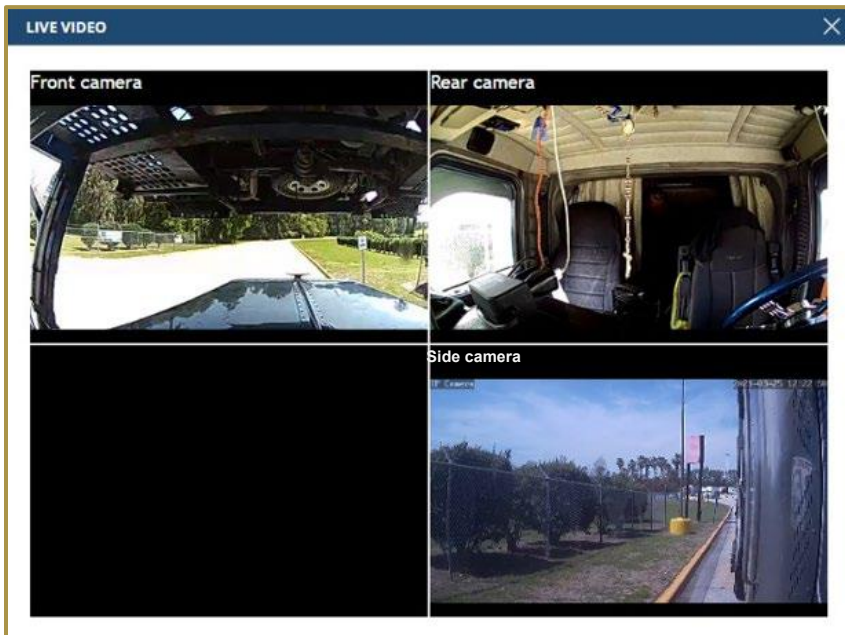
A POWERFUL AND EASY TO USE VIDEO TELEMATICS SOLUTION

- **FUTURE PROOF**
Grows with the needs of your fleet, additional features are released without a hardware upgrade.
- **DISTRACTED DRIVING**
Innovative MV+AI provided insight into risky driving across fleets.
- **LIVE VIDEO STREAMING**
Live video streaming from dual, road-facing and driver-facing cameras, provides real-time insights across fleets*.
- **ALERTS AND COACHING**
Live video streaming
- **WIFI HOTSPOT**
Easily connect to IoT device and auxiliary cameras.
- **SIMPLE INSTALLATION**
Quick 10 minute install with multiple options to connect to power.
- **SUPPORT**
Dedicated personal support and training by our experienced team.
- **ENTRY LEVEL PRICE**
Surfsight delivers a premium solution at an affordable price.



*Subject to available cellular network coverage.

PIONEER SAFETY SOLUTIONS



The Surfsight AI-12 features advanced technology such as machine vision and artificial intelligence that provides detailed analytics and real-time visibility into overall fleet performance, giving companies valuable data to help increase safety and savings through better fleet management.

Surfsight AI-12 offer fleets the best-in-class live video telematics available in the market, at an entry level price point – without sacrificing quality for price. Designed for commercial vehicles, Surfsight is rugged tested and future proof – allowing fleets to grow without swapping hardware for additional features and/or additional cameras. In addition to its cutting-edge technology, **Surfsight offers an easy installation (10-minute)** with multiple options to connect to power and built-in WiFi hotspot to easily connect different devices and

cameras.

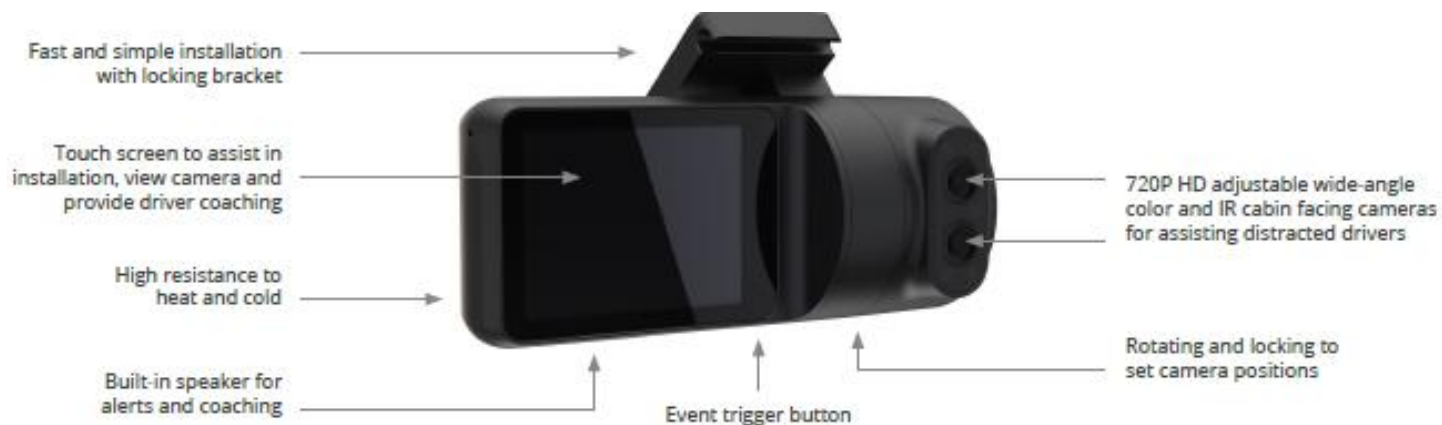
Instantly view live video, review near misses, collisions, harsh driving events, distracted driver, cargo situation, driver and passengers' assaults – leaving no room for speculations. View crisp HD live video of the road and driver simultaneously. Get instant access to full HD video footage uploaded automatically to the cloud and stored for 30 days. Play and retrieve video footage captured on SD card directly from the dashboard. Securely share video footage inside and outside the network by generating a simple URL link. Enable easier collaboration and sharing.

Surfsight AI-12 road-facing camera



PIONEER SAFETY SOLUTIONS

Surfsight AI-12 driver-facing camera



- **Additional Cameras:** Ability to connect to 4 additional cameras, wired and Wi-Fi.
- **Sensors:** Distracted Driver, Braking, Acceleration, Speeding, Sharp Turns, GeoFence, Event Trigger Button, Tamper Alerts, Jolt
- **Speaker/Audible Alerts:** Built-in speaker for alerts and coaching

Distracted Driving – Food/Drink



PIONEER SAFETY SOLUTIONS

Distracted Driving – Phone Use



Seatbelt Use – Passenger is not belted



PIONEER SAFETY SOLUTIONS

Additional Cameras:

Surfsight Side camera



Side cameras can be used to monitor fueling* to reduce theft and can be utilized to monitor the driver's actions while operating the equipment on/around the truck.

**Requires modified fuel tank cap.*



Surfsight Rear-view camera



Rear-view camera can be attached to trucks & trailers to monitor surroundings.

Surfsight Tamperproof case



Tamperproof case.

Surfsight Cloud Service

- ✓ Manage all your vehicle cameras from a secured cloud dashboard.
- ✓ Get instant access to live video, video events and video recordings through a simple 1-click interactive map interface and an export option.
- ✓ View real-time vehicle GPS route tracking, details and history logs. Surfsight cloud service
- ✓ Receive email alerts of harsh driving incidents with the details and the video of the event.
- ✓ Set permission and roles, for data and users access control.
- ✓ Retrieve video recordings from the Surfsight dashboard without removing the SD card.

In-Vehicle Camera - idrive



The World's Most Intelligent Driver Monitoring Technology

We develop technology that identifies and interprets human driving behavior to save lives and improve driver performance.

The idrive AI Cam

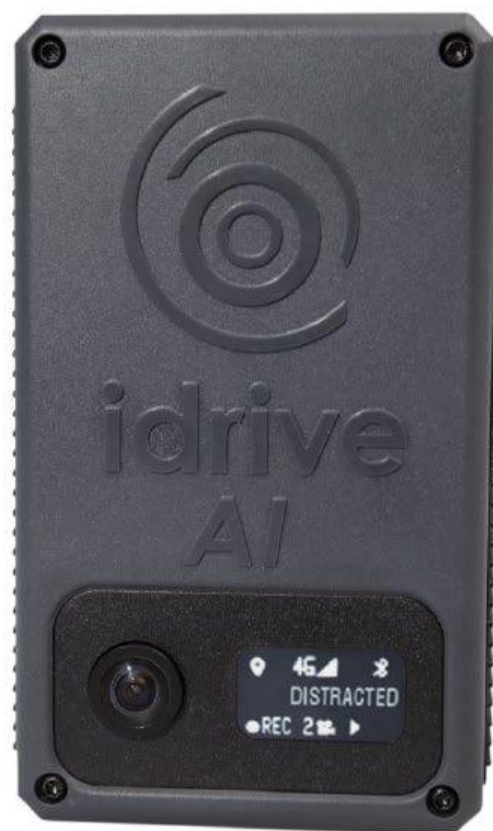
A Dash Cam with a Mind of its Own

POWERED BY THE BEST

- › Integrated dual-camera (road + driver facing) device
- › IR sensor for low light operation
- › Event Triggers: Speed, G-Force, Accident, Panic, AI Triggers & more
- › OLED display for camera status and in-cab alerts
- › Cellular upload to secure online cloud
- › Live Tracking with ability to request live events
- › Custom camera settings fleet wide or per vehicle

SMARTER THAN THE REST

- › Real-time fatigue and distraction detection with alerts
- › AI to assess risks & warn drivers with real-time alerts
- › Facial recognition for driver safety and coaching
- › Embedded neural-network for real-time data processing
- › Fleet machine-learning with advanced AI detection
- › Predictive & Prescriptive analytics for better driver coaching
- › Events transferred to secure online cloud for immediate review
- › Mobile App for iOS and Android Users
- › World class encryption technology



Facial
Recognition



Safe Distance
Warning



Drowsy Driving
Detection



Distracted Driving
Detection



Accident
Detection



Driver Coaching
& Reports

Get the Full Picture

All video events are annotated with trigger type, driver name, video ID, location, time and date to provide you a complete picture at a glance

Real-Time

iris creates a real-time connection between driver and manager to detect and prevent accidents, connected through a multi-network global IoT network

Anytime

View critical footage in real-time with live look-in or before and after an event to exonerate innocent drivers and decrease insurance premiums.

PIONEER SAFETY SOLUTIONS

EMBEDDED AI

Real-time drowsy & distracted driving detection & alerts
Embedded facial recognition & driver identification
Embedded safe distance warning for following to close
Fact based decision making through predictive & prescriptive analytics
Proprietary AI, deep-learning and computer vision algorithms
AI to assess risks and warn drivers with real-time alerts
Custom AI sets & training data
Fleet Machine-Learning with advanced AI features

ADVANCED ANALYTICS & REPORTING

Company & Driver scoring on Safety, Efficiency and Compliance
Advanced reports based on Predictive and Prescriptive Analytics
Custom reports on drivers that need coaching
Configurable parameters for scoring
Analytical Dashboards
Driver Performance Management & Monitoring Dashboards

ALERTS, EVENTS & VIDEOS

Video length over cellular is 8 seconds
HD video length for on camera events is 30 seconds
Secure Micro-USB download of videos manually
Live look-in (8 seconds SD video @10fps @ less than 5MB file size)
Triggers & Alerts:

- Distracted and Drowsy Driving
- Safe Distance Warning
- Accident
- Speed and Super Speed
- Aggressive Driving / G-Force
- Panic Button
- Wire Triggers (Light bar, Door Open and more)
- Random/Periodic
- Sleep Mode

HARDWARE SPECIFICATION

Processor: 8 (Octa) Core
Memory: 2GB
Storage: 64GB
Camera's Field of View: 140° (internal) / 168° (external)
Connectivity: Cellular + WiFi + Bluetooth LE
Accelerometer: 3-Axis + Gyroscope
Power: 12V-24V
Low Power Consumption: <1 mA on Standby
Onboard capacitors for no data loss (Battery Backup)
Operating Temperature: -40°C to 85°C
Compliance & Certification: FCC, CE, RoHS, GDPR & others
Integrated dual-camera (road + driver facing) device
Ability to turn inside camera and in-cab audio (mic) off
Manual trigger (panic button)
OLED display for status, notifications and device health
Custom accelerometer settings per device
Enhanced physical security for the device using security screws & locking kit
Over the air (OTA) firmware updates & system health-checks
Short Installation time per device (30 to 45 min)
Quick recalibration time per device in case of replacement (approx. 5 min)
Industrial-grade parts that are designed for years of use

INFRASTRUCTURE, INTEGRATION & MORE

Online secure cloud-based platform, iris
Idrive iris is accessible through all devices
Idrive mobile app available for iOS and Android users (Driver & Managers)
24/7 Support Services
Designed & Manufactured in USA and EU
Hardware & Software designed & developed In-house (100% proprietary)
Hardware Warranty for duration of service contract
Minimum contract period of 3 yrs.
Typical ROI is between 3 to 12 months
Training & On-boarding through idrive support
24/7 Multi-network global IoT connectivity offered in over 185 countries
3G/ 4G IoT connection with guaranteed QoS & robust signal across borders
Global Roaming Data SIM (M2M) included

PIONEER SAFETY SOLUTIONS

Keep Your Fingers on the Pulse of Driver Safety



Tracking more than 100 driving behaviors and maneuvers from acceleration, braking, cornering, lane handling and speeding idrive analyzes and translates risky driving events into a safety score for managers to track driver performance by driver, fleet and even a team.

Dangerous Driving Behavior Auto-Detection

Review event

☐ Minor Collision ☐ Collision ☒ Hard Cornering ☐ Hard Braking ☐ Hard Acceleration ☐ Speed ☐ Super Speed ☒ Compliant Behavior

Severe Driver Behavior

- ☐ Driver Unbelted
- ☐ Talking (Cell Phone)
- ☐ Falling Asleep
- ☐ Texting (Cell Phone)
- ☐ Violent Behaviour
- ☐ Red Light
- ☐ Following Too Close

Poor Driver Behavior

- ☐ Driver Smoking

Event Fault

- ☐ Driver Fault
- ☐ Common Fault
- ☐ Other Fault - Could be avoided
- ☐ Other Fault - Could not be avoided

Driver:

Vehicle:

Enter your comments below:

Review history:

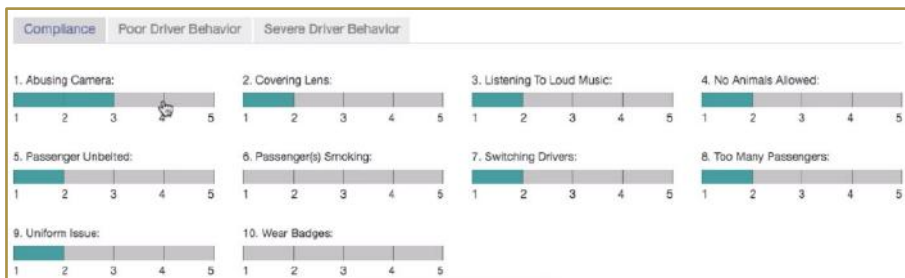
Event: 8Y1BB98CF22
Location: Connecticut
Local time: 05/22/2019 9:34 PM
Max speed: 2.43 mph

☐ Incident ☒ Reviewed

2 - Moderate Events, passenger mistakes

Data collected from hundreds of millions of videos and miles of driving is routinely analyzed through our deep learning algorithms to auto-detect unsafe driving behavior and prevent accidents in real-time.

Track What Matters to You



iRIS seamlessly allows you to adjust the importance of various driver behaviors and in-cab activity. Quickly set the priority for each index that you want to identify and correct. Adjustments can be made at the individual driver and fleet wide level. Which drivers are doing this? When? Why? Get the data reflected in driver scores right away.

In-Vehicle Camera - Streamax

Streamax Streamax is an AI-powered mobile surveillance and industrial management solutions provider for commercial vehicles.

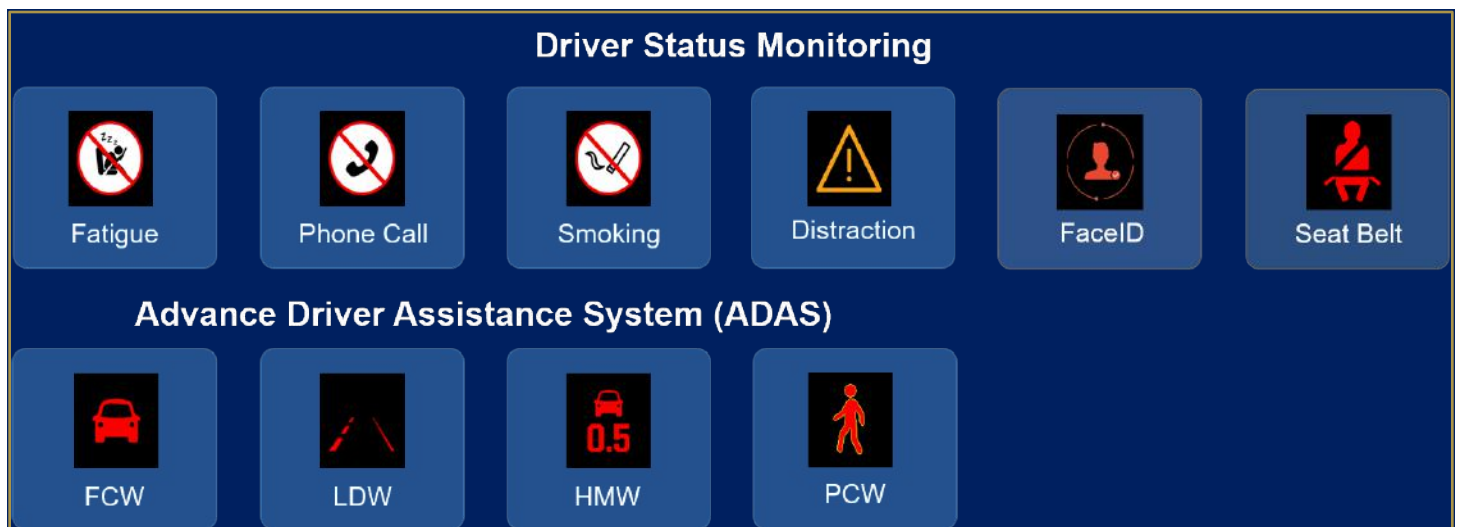
Streamax C6D AI is an advanced dash camera with a built-in AI processor to detect driving events such as lane departure, forward collision, and driver behavior such as fatigue, distraction, smoking, and phone call usage.

The C6D AI can alert the driver in real time of dangerous behaviors, and upload events to a monitoring platform to be reviewed by a fleet manager to aid them in coaching the drivers to reduce risk.



Product Features

- Supports up to 3 channels of video recording;
- Built in AI event detection with ADAS and DSM capabilities (requires optional DSM Camera);
- Harsh driving detection with 6-axis G sensor (Harsh Acceleration, Deceleration, and Sharp Turn);
- Real-time in-cab feedback;
- Dual SD card storage with dual stream recording (HD and SD Recording);
- Built in Bluetooth, Wi-Fi, and LTE modules;
- Supports live streaming, video playback, and event upload;
- Covered by one of more claims of the patents listed at patentlist.hevcadvance.com.



NOCELL Distracted Driving (Mobile Device) Management

DISTRACTED DRIVING IS A DEADLY & COSTLY EPIDEMIC...

NOCELL™

The NOCELL™ app enables custom policy enforcement and limits driver distraction caused by mobile device usage. Our unobtrusive NOCELLtag™ creates the NOCELL Zone to disable unauthorized apps.

The NOCELL™ Platform is compatible with both Android and iOS devices.

The NOCELL™ app can be installed on up to 3 devices per driver. If your driver uses a tablet for work purposes, NOCELL™ can be installed on the tablet, as well as their non-work personal device to mitigate distracted driving even more.



Full Customization

Set app-level device use policies and define parameters to be implemented while driving, configurable for any fleet organizational structure.

Commercial-Grade Design

Powerful iOS & Android compatible software functions as a standalone solution for fleets of any size and effortlessly integrates with fleet telematics & in-vehicle camera technologies.

Policy Enforcement

Enforce policy through removal of distracting apps and receive real-time alerts for phone handling, rogue devices, & non-compliance.

Privacy Protection

Disable tracking policy enforcement during non-working hours to protect employee privacy.



Asset Tracking

Solar Powered



TOPFLY - LTE & GSM TLP2-SFBTLP2-SFB

Large Solar Powered GPS Tracker with BLE 5.0. A 4G solar powered gps tracking device that is designed to track the location of assets/trailers/trucks and monitor the temperature, humidity, door status, etc., when working with BLE sensors. Its features huge battery and solar powered for the operation of BLE5.0. Its battery can obtain power from solar to avoid maintenance cost.

Feature	Description
Real time tracking & buffer locations	Real time location updates can be as frequent as 3s. Up to 60,000 location points can be saved in buffer if out of network coverage.
BLE 5.0 for sensors	Compatible with TOPFLYtech's BLE temp & humi sensor TSTH1-B, temp & door sensor TSdT1-B, wireless relay TSR1-B and your own sensors.
Movement Alerts	Alerts for assets moving and parking.
Long battery life	Rechargeable Li-Polymer 9600 mAh/3.6V battery, battery last for months without solar powered charging.
Easy Installation	The large solar panel charges the integrated rechargeable lithium battery with power equivalent to the transmission of up to 10 GPS positions a day.

External Powered (Battery or Power Source)



TOPFLY - LTE & GSM TLW2-12B

Hardwired trailer tracker with large internal battery and BLE 5.0. It can be powered when wired and towed by trucks and operate on only battery when trailers standing alone (power disconnected). The multiple inputs and outputs could be used for connecting accessories. It can be mounted with magnets, screws, polyurethane or heavy-duty tape by end users.

Feature	Description
Real time tracking & buffer locations	Real time location updates can be as frequent as 3s. Up to 60,000 location points can be saved in buffer if out of network coverage.
Driving Behaviour detection	Detecting reckless driving events such as harsh acceleration, turning, braking, crash and speeding.
BLE 5.0 for sensors	Compatible with TOPFLYtech's BLE temp & humi sensor TSTH1-B, temp & door sensor TSdT1-B, wireless relay TSR1-B and your own sensors.
Movement Alerts	Alerts for assets moving and parking.
Large battery backup	9600 mAh/3.6V battery to run for up to 20 days (5 mins reporting) without charging.
3 Configurable outputs	Compatible with wiring relay, buzzer and siren for vehicle immobilisation for anti-theft.
3 Configurable Inputs	Input that can be used as digital or analogue input. Usually used for TOPFLYtech's ultrasonic analogue fuel sensor.

Environmental Solution

EnviroApps

EnviroApps

Manifesting, Tracking, and Compliance

EnviroApps helps Operations and EHS Managers, at Energy companies track dangerous goods, waste, and water use; ensure compliance and provide better and reliable ESG reporting data, at a fraction of their current cost and efforts.

Commodity pricing is creating cost competitiveness pressures for all entities involved in the transportation of dangerous goods. The current paper-based system creates many challenges for the entire industry.

CURRENT SYSTEM	WITH ENVIROAPPS
<ul style="list-style-type: none"> Paper forms Lack of real-time visibility, often 30 days+ Data does not equal business intelligence Spreadsheet tracking systems prone to high administrative cost and subject to duplication of efforts and human error First Responders at increased risk due to lack of accessibility to documents Compliance risks / fines COVID-19 Induced Complexities: <ul style="list-style-type: none"> Remote workers – lack of access to paper documents Paper as a transmission pathway during current pandemic 	<ul style="list-style-type: none"> Cloud based digital solution, accessible anywhere Ability to integrate into your existing platform Intuitive, easy to use, mobile friendly Efficient support - regulatory requirements, analytics No upfront investment / Quick and high ROI Robust workflow managed by Consignor, Consignee or Carrier Ability to manage: <ul style="list-style-type: none"> Hazardous/Oilfield Waste Manifesting TDG Shipping Documents Bill of Lading/Truck Tickets Reduce operational and administrative burden to track, report, communicate Automated notifications (TDG Requirement) Information relay to Inspector or First Responders Generate Regulatory & ESG (Sustainability) Reports Minimize driver distraction while loading/unloading Solution under Transport Canada Regulatory Sandbox

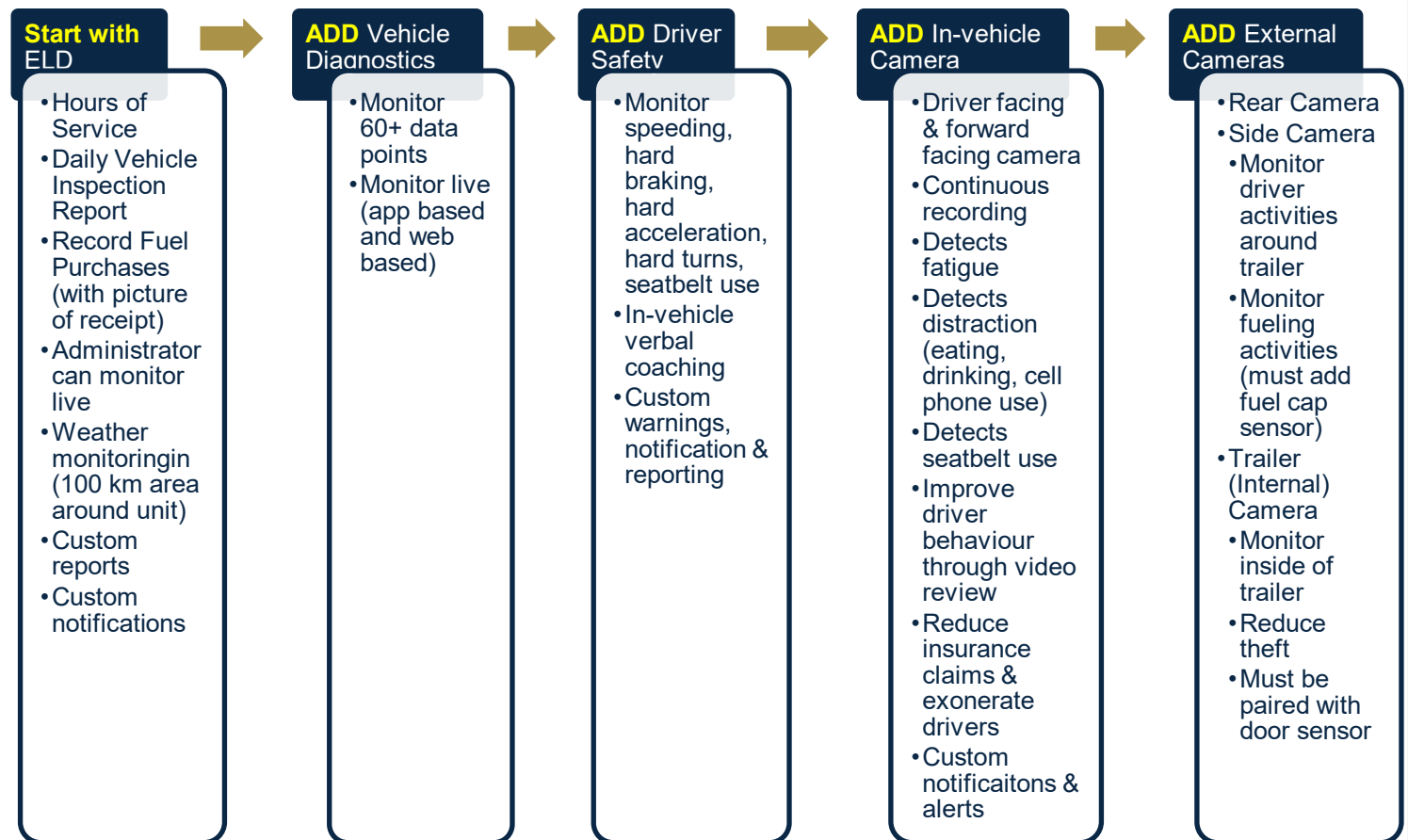


Fit-for-Purpose Solutions

Stackability & Integration

Our ability to integrate multiple solutions onto a single platform is our advantage when compared to telematics providers which supply a single “off-the-shell” device. As their device places a customer in an “all-or-nothing” situation when it comes to features and reporting, Pioneer will develop a unique solution for each customer.

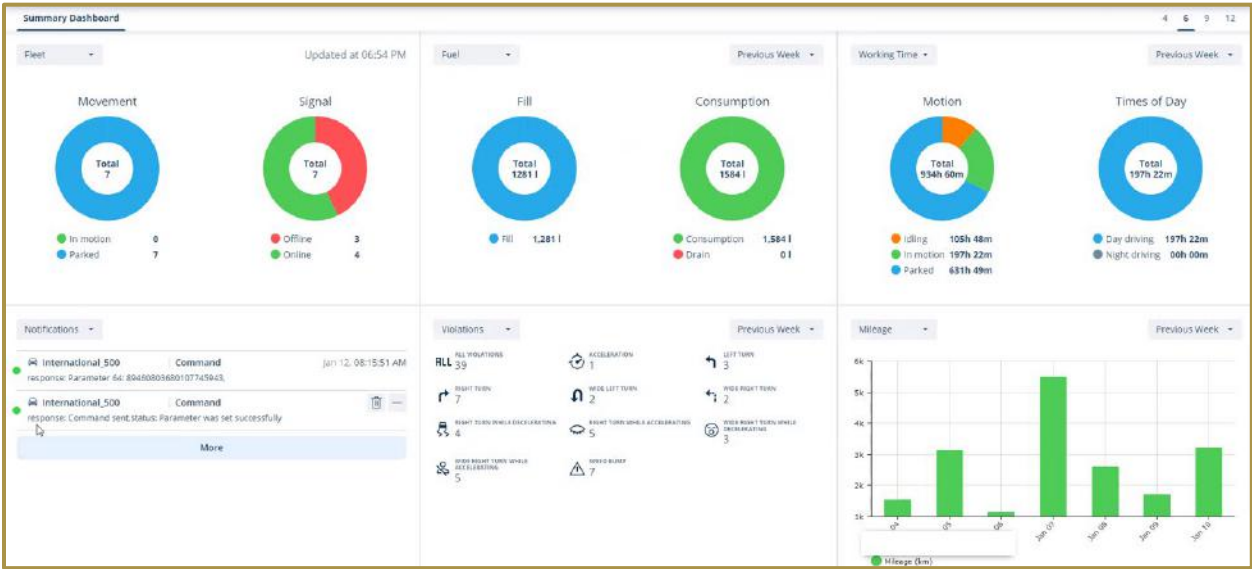
By stacking solutions, clients are able to implement what they need to help the company meet its corporate goals.



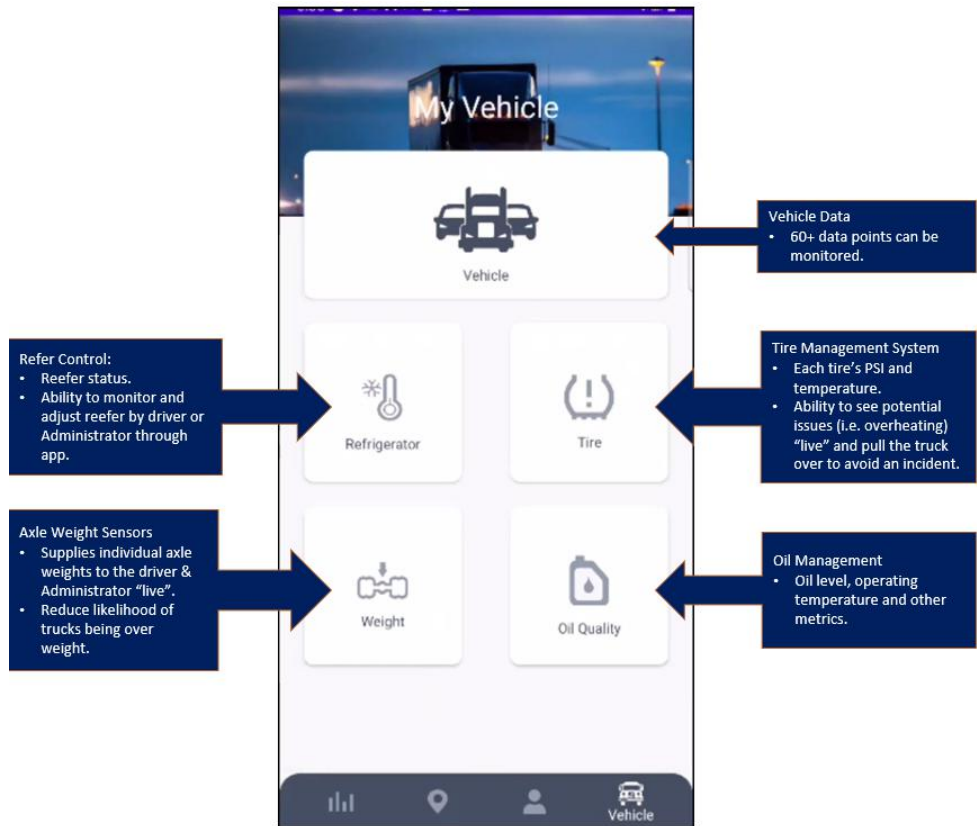
One platform for all your technology. Built to meet your company's needs.

PIONEER SAFETY SOLUTIONS

Within the Administrator Portal, customizable dashboards can be created. Below is an example of a dashboard containing the key metrics for this company's success.



Below is an example of a solution designed for a client. The visual is from a driver's tablet, in which multiple solutions have been integrated onto a single platform. The solution includes vehicle engine data (including a separate button exclusively for oil quality), reefer control, axle weight sensors and tire management.



People

TalentClick

A Fast, Easy, Affordable Way to Help Reduce Risk Caused by Employee Actions!

TalentClick helps organizations achieve workplace excellence through understanding people by using predictive analysis. The field of predictive analytics has exploded. 60-70% of Fortune 500 companies use assessments because they work. TalentClick is revolutionizing the industry with unlimited, customizable assessments that can be used on front-line workers throughout the employee life cycle. This way, you can use unbiased, actionable insights to build happier, safer, and more productive teams.

Hiring the right person can save time and money!

Identifying Driver Safety Risk Factors by Assessing Attitude, Values & Personality

Background: TalentClick and 4 transportation companies collected a research data sample to determine the relationship between attitude, values and personality and high-risk driving behaviors in order to predict and decrease road incidents.

The Companies' objectives were to:

1. To establish which personality characteristics in operators are linked to safety outcomes such as injuries, collisions, moving violations, company rule violations.
2. To help create a business intelligence tool which can be used to:
 - help hire safer drivers
 - help train & coach existing drivers
 - help create a predictive analytics tool which insurance companies may possibly use to reduce insurance premiums for safer drivers and/or companies.

Data Analyzed:

- 4 companies participated with a total of 176 driver participants.
- TalentClick collected job performance data and driver safety-incident data involving any of the 176 drivers.
- TalentClick analyzed safety incidents, job performance ratings and telematics data in relation to assessment scores on 19 behavioral traits.

About the AVP

TalentClick specializes in workforce analytics and online behavioral assessments. Our assessments provide business intelligence to help organizations make better decisions in hiring, training, and performance management. The solution utilized in this research study is called the AVP (Attitude, Values, Personality) which creates actionable hiring and coaching insights from a number of different reports, all derived from one 10-15 minute questionnaire.

1. DSQ (Driver Safety Quotient)
2. SQ (Safety Quotient)
3. WPP (Workstyle & Performance Profile)
4. WVA (Work Values & Attitude)

FINDINGS

'IMPULSIVE' DRIVERS have a

68%

higher
At-Fault Crash Rate

'SPONTANEOUS' DRIVERS have

7.7x

more
Traffic Violations

'DISTRACTIBLE' DRIVERS HAVE A

80%

higher rate of
Vehicle Damage

Contact TalentClick at
connect@talentclick.com

Fitness for Duty

Sobereye



SOBEREYE is a proactive testing and monitoring service that addresses the problem of workers' impairment in the workplace. Our technology, developed with research from neuroscience, ophthalmology, iris recognition, and image processing, measures impairment risk from fatigue, alcohol, marijuana, and other drugs with a simple eye test.

A safer workplace in the blink of an eye.

One-minute self-test

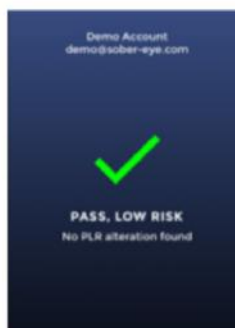
- Portable, can be used anytime and anywhere
- Identifies the person under test (Iris recognition)
- Immediate test results



THE POWER OF IMPAIRMENT TESTING

- Promotes safer behaviors
- Accepted by the employees
- Early detection of risks

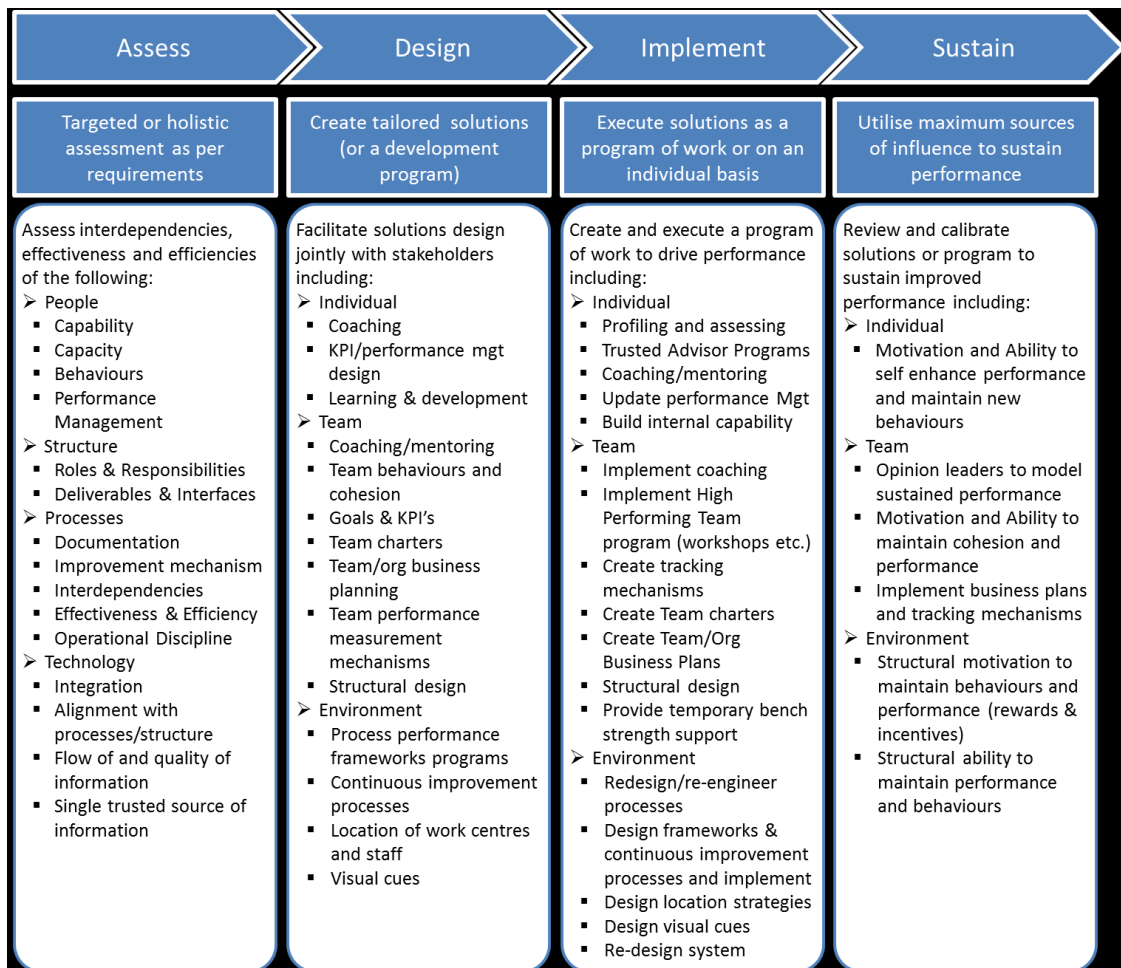
Result screen



Consulting Services

Consulting Methodology

To enable an organization to sustain high performance, Pioneer utilises the following 4 stage process:



Common Thread in all we do: Risk Management

Risk management is the identification, evaluation, and prioritization of risks (defined in ISO 31000 as the effect of uncertainty on objectives) followed by coordinated and economical application of resources to minimize, monitor, and control the probability or impact of unfortunate events or to maximize the realization of opportunities.

Risk Management is the cornerstone for all of our consulting services and PSS will help clients understand that managing risk effectively is critical to achieving business objectives. PSS will work with the client to understand their objectives and:

PIONEER SAFETY SOLUTIONS

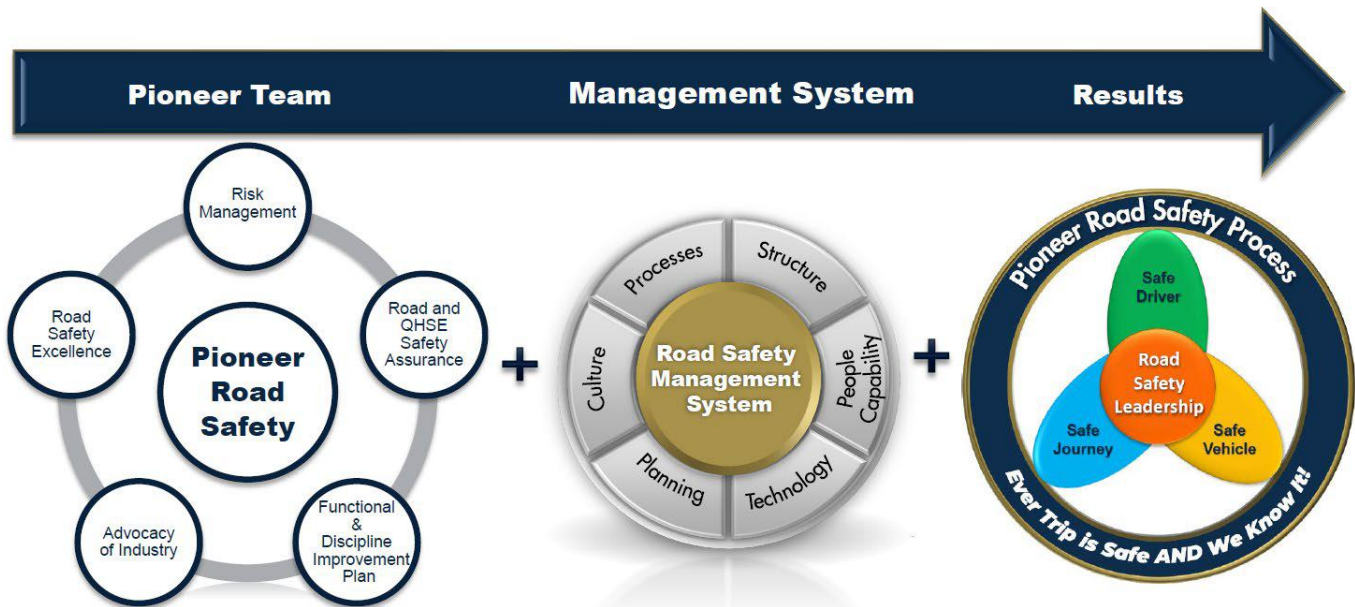
- identify risks to the achievement of those objectives.
- assess the impact and likelihood of the risks materializing.
- implement effective actions designed to:
 - achieve business objectives.
 - safeguard company assets from inappropriate use, loss or fraud.
 - facilitate economic, effective, efficient and safe operations.

Areas our consulting services cover are Road Safety, Occupational Health & Safety (OH&S) and Environment. Within each, we focus on Human and Organizational Performance (HOP) and transforming a client's safety culture into one which learns from incidents. HOP is a global movement towards using the social sciences to better understand how to design resilient systems. PSS follows the **Principles of HOP**:

- Principle One: Human Error is Normal
- Principle Two: Blame Fixes Nothing
- Principle Three: Learning Is Vital
- Principle Four: Context Drives Behavior
- Principle Five: How You Respond to Failure Matters

Consulting Services: Road Safety

Road Safety can be viewed as a **Process**: the collective set of actions and steps taken in order to achieve safe road transport; including actions and steps taken prior to, during and after the road transport operation is completed.



Solutions:

PSS can gap assess a client's current Road Safety operation against international standards, then develop gap closure and implementation plans. A robust road safety program contains numerous components which impact all parts of an

PIONEER SAFETY SOLUTIONS

organization (i.e Operations, Human Resources, Fleet, etc.). Diagram 1 (below) supplies a high-level overview of the components of a Road Safety Management System.



Diagram 1: Road Safety Management System

The following detail the activities which go into building a robust Road Safety Management Programme:

Road Safety / Land Transportation Program		
Gap Analysis / Auditing	Driver Behavior Risk Management	Traffic Management Plan
International Standards (IOGP #365)	Road Safety Campaigns	Road Hazard Assessment
Global Recommended Practices	Journey Management	Rollover Risk Assessments
Driver Competence	Road Safety Management System	Fleet Management
Travel Security	Transportation Security	Fitness for duty
Gap Analysis / Auditing	Behavior Based Safety Programs	Work Alone Strategies
Risk Threshold	Emergency Response Planning & Management	Incident Management, Investigation and Learning
Risk Assessment	Policy & Procedure Development	Contractor Management
Risk Mitigation	Social Performance	Sub-contractor Management
Risk Management	Fatigue Risk Management Plan	Contingency Planning
Chain of Responsibility	Hazard Identification	Bowties & Barrier Management
Human Performance	Compliance Requirements	

Driver Competence		
Defensive Driver Training	Daily Vehicle Inspections	Journey Management
Load Securement	Hazard Identification	Hours of Service
Fatigue Awareness	Transport of Dangerous Goods	Weights & Dimensions
Human Performance	Spotter Training	Rollover Awareness
Driver Training Syllabus	Regulatory Training	

PIONEER SAFETY SOLUTIONS

Technology		
In-Vehicle Mentoring System	Policies, Procedures and Guides	Global Tracking Solutions
Data Analytics	Consequence Management	Electronic Logs
System Procurement	Work Alone Monitoring	Black Spot Map
Driver Behavior Improvement	Making Data Actionable	Fuel Consumption
Driver Mentoring/Coaching	Performance Reporting	GHG Reduction
Fatigue Monitoring	Performance Dashboards	Idling Trends
Predictive Maintenance	Route Optimization	

Vehicles		
Vehicle selection (5-Star)	Fleet Maintenance Program	Vehicle Inspections
Fleet Procurement	Fleet Management	Buses
Policies, Procedures, Guides	Collision reconstruction	Motor Coaches
Manage Grey Fleet	Vehicle Specifications	Light, Medium & Heavy Vehicles
Regulatory Compliance	Collision Investigation	

Consulting Services: Occupational Health & Safety

Our experienced team will work closely with your business to identify risks in the workplace, provide advice on how they can be controlled, and ensure that you successfully meet the required standards. The Pioneer team can help your company:

- Develop a risk-based, yet easy-to-follow, OH&S management system tailored to suit your individual business to help ensure you maintain due diligence.
- Assess and audit your existing management system against recognized standards to identify opportunities for improvement and ensure compliance with legislation.
- Maintain your OH&S system and any third-party compliance sites such as ComplyWorks, Avetta and ISnetworld.
- Establish a risk-based approach to hiring and performance management of safety-sensitive employees and staff in leadership roles.

Consulting Services: Environment

Pioneer's team of experts leverage the use of our best available technologies to provide business solutions for companies to identify and manage their environment and regulatory risks associated with the handling and movement of dangerous goods and hazardous materials. Our team can help to:

- Identify and inventory hazardous and dangerous materials for regulatory compliance to handling and storage requirements.
- Identify solutions and options for materials management and waste disposition.
- Transportation of Dangerous Goods compliance, ticketing, tracking, and reporting
- Provide hazardous material metrics for Sustainability/ESG reporting.

Performance Management & Sustainability

Sustainability and continual improvement require a robust safety management system. Pioneer develops and enhances the existing elements of a client's management system to target key opportunities to maximize effectiveness and system

PIONEER SAFETY SOLUTIONS

efficiencies. If there is no formal system in place, Pioneer can custom design and implement a robust fit-for- purpose safety management system.

Pioneer utilizes the international Association of Oil and Gas Producers (IOGP) Report #510, Operating management system (OMS) framework as the foundation for a high-integrity system. IOGP represents the upstream oil and gas industry to international organizations and authorities putting forth best practices, particularly in the areas of health, safety, the environment and social responsibility. The Framework comprises two interdependent components:

- **Four Fundamentals** focus attention on management principles that are arguably the most important for an effective OMS—Leadership, Risk Management, Continuous Improvement and Implementation. These principles are not sequential and they apply equally to every Element of the OMS to drive its success. Constant focus on each Fundamental will sustain the OMS, strengthening performance and effectiveness.
- **Ten Elements** establish a structure to organize the various components of an OMS. Pioneer understands that there are many components to a safety culture, including leadership and commitment; behavioural tools; clear and relevant KPIs, reward and recognition, accountability, appropriate policies and procedures.

Pioneer works with its clients to develop and implement a high-performing management system by creating a new system or integrating safety elements into an existing management system.



© Copyright of the International Association of Oil and Gas Producers and IPIECA.

Strategic Partnerships

Pioneer has strategic partnerships with multiple companies and we have the ability to incorporate any of these partners into your corporate solution.



Prometheus

Prometheus (www.prometheuspro.us) offers a full-featured cloud-based GPS tracking solutions with mobile app with everything you need to monitor vehicles. Prometheus delivers a unique experience to your needs. Features include vehicle locators, vehicle maintenance, dispatching, analytics, mobile, driving behavior, remote video, etc.

Prometheus is formed by a team of fully qualified team of professionals, with experience in several technological fields. Expertise is based on the integration of different technologies to develop creative and efficient solutions that suit every client's need. We know that tracking services are easy to obtain these days, that's why at Prometheus we push the boundaries, applying our knowledge in different fields so we can deliver solutions for all industries, such as healthcare and the justice system. We've come with the market's most complete tracking and fleet management systems. In Prometheus we listen to our client's and partner's voice and take it into account for the construction of our solutions.



Spira Data Corp.

Spira Data Corp. (<https://www.spiradata.com>) provides cutting-edge data management software solutions. North America's leading all-in-one software for the largest Enterprise, covering industries such as Hydrovac, Health Care, Logistics, Construction, Energy, Oil & Gas, and other Field Services. Spira's ORP™ is changing the way organizations gather, distribute and analyze information from their operations by digitally- linking the field and the office, creating a trusted source-record for revenue, cost, compliance, utilization and scheduling.



Pandell Technology Corporation Inc.

Pandell (<https://www.pandell.com/>) is a leader in delivering Software-as-a-Service (SaaS) products and services to 500+ energy companies in Canada and the United States. Our customers range from startups to major enterprises throughout the energy sector including upstream oil & gas, midstream facilities, field services, land brokers, pipelines, utilities, mining, and renewable energy. Our cloud-hosted product suites help finance, land, and operations teams run their business more effectively; while our enterprise division builds and manages large-scale web portal applications that facilitate work across organizations.

PIONEER SAFETY SOLUTIONS



VDIS (Visual Dispatch)

VDIS (<https://www.vdis.com/>) is a dispatch and operations management software suite that has been helping our customers operate more efficiently and effectively through the power of knowledge since 1993. VDIS (Visual Dispatch) is a point-and-click graphical database system that immediately increases your resource utilization, tracks and reports on your operations for long term strategic planning and increases company wide safety with Journey Management and Work Alone Management tools. Additionally, the system incorporates dispatch and scheduling. Complete records of your people, equipment and materials are created for every job, client, area and time period...all available through reports that bring you real-time information when you want it and where you want it.



INX Software

INX Software (www.inxsoftware.com/ca) is a globally trusted leader of fully integrated environment, health and safety solutions driving the creation of safer, smarter and sustainable workplaces. Our cloud-based software and mobile-capable solutions are standard across high-risk and complex operations including mining, utilities, oil & gas and government sectors, with over 180 enterprise clients and 700,000 users to date. With a global team of industry experts, we enable health, safety and environmental professionals to manage risk, achieve compliance and enhance operational efficiencies across workforce mobilization and travel logistics, workplace health and safety, environmental and statutory compliance, training and competency management.



Brema Business Solutions

Brema (www.breama.com) is an industry leader in Salesforce implementation and business process optimization. Our organization is focused on driving digital modernization of businesses and government bodies, proven by successful operations across North America.

Our business is helping organizations increase process efficiency and civic transparency through the standardization, digitization and optimization of existing processes and workflows. We do this by leveraging technology and software to provide solutions for our clients.

Transportation Safety Partner:



CayCan Safety Consulting

CayCan (www.caycan.ca) provides a variety of services designed to train, measure and support the transportation industry. We are focused on supplying professional services tailored to teach transportation compliance management.

CayCan Safety is contracted by Alberta Transportation to conduct regulatory transportation vehicle safety audits which measure the carrier's compliance with the National Safety Code, as well as, New Carrier Compliance Reviews.

PIONEER SAFETY SOLUTIONS

CayCan Safety Consulting provides industry leading transport vehicle training. Our staff are educated in the field of transportation compliance management and can provide insight into vehicle inspection guidelines, load attachment requirements and National Safety Code compliance.

Contact Information

Mike Bertamini

CEO



403.700.8844



mbertamini@pioneersafetyolutions.com

Bob Briggs

President



403.901.8338



rbriggs@pioneersafetyolutions.com

